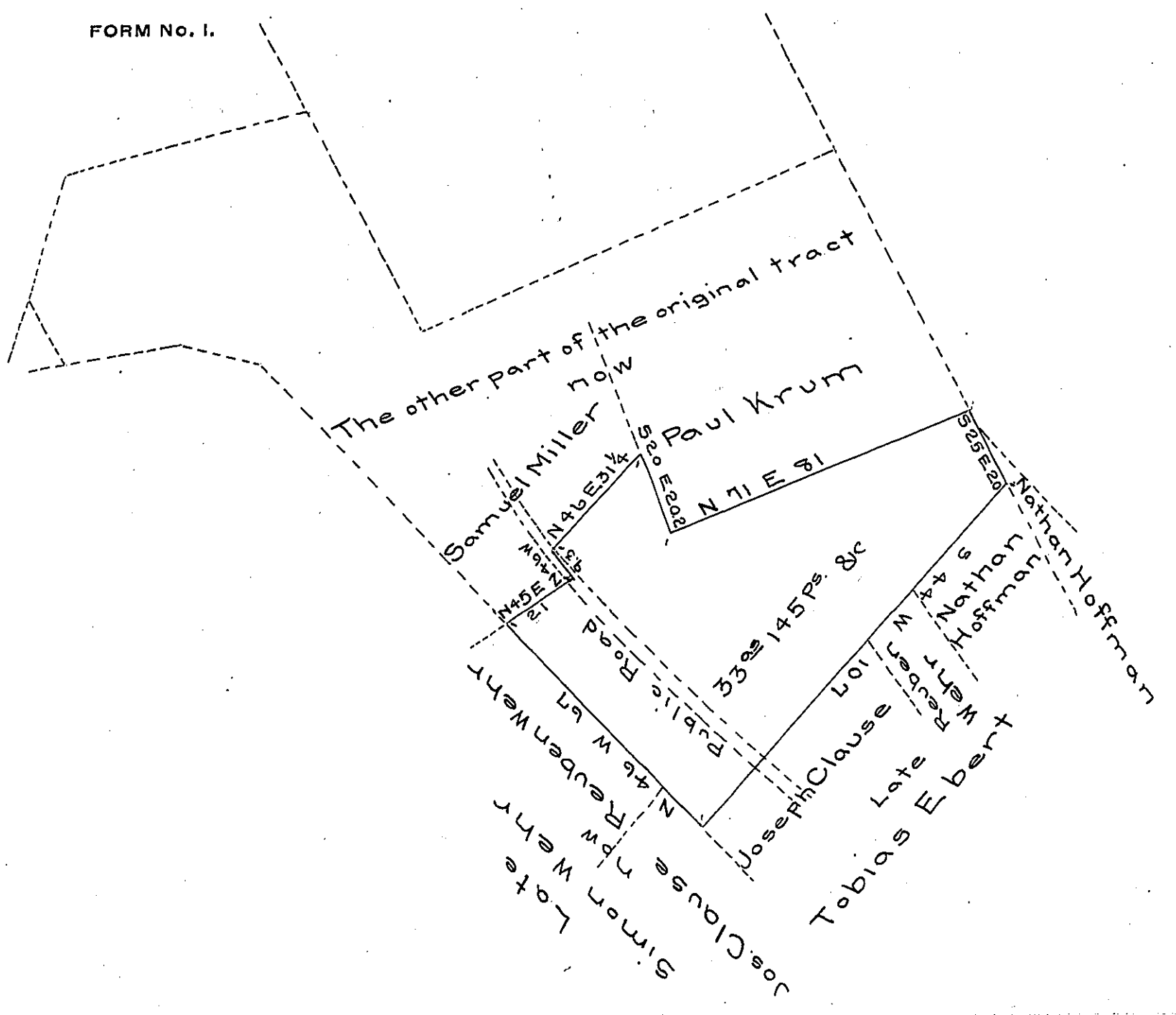


FORM NO. 1.



Draft of a tract of land, situate in Heidelberg town-
 ship, in the County of Lehigh containing 33^{as} 145^{Ps.} &
 allowance of six per cent for roads & surveyed for
 Joseph Clause, Reuben Wehr, and Nathan Hoffman
 the 14th day of March A.D. 1872, being a part of a lar-
 ger tract of 103^{as} 45^{Ps.} & allowance originally survey-
 ed in pursuance of a warrant granted to John
 Weaver dated Sept*22^d 1748.

Geo. Blank C.S.

To J.M. Campbell Esq. }
 Surveyor General }

* say 21st

IN TESTIMONY that the above is a copy of the original remaining on file in
 the Department of Internal Affairs of Pennsylvania, made
 conformably to an Act of Assembly approved the 16th day of
 February, 1833, I have hereunto set my Hand and caused
 the Seal of said Department to be affixed at Harrisburg,
 this eighteenth day of December 1906.

Geo. A. D. ...
 Secretary of Internal Affairs.